



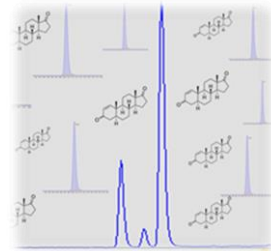
Sex Steroid Panel

by **Liquid Chromatography-Tandem Mass Spectrometry (LC-MS/MS)**

Mater Pathology is now routinely measuring the following steroid hormones by tandem mass spectrometry (the gold standard in steroid testing) in plasma or serum:

- TESTOSTERONE (sensitive to <math><0.1\text{ nmol/L}</math>)
- ANDROSTENEDIONE
- 17-HYDROXYPROGESTERONE
- DHEAS
- OESTRADIOL (sensitive to 3.6 pmol/L) on request
– suitable for men, children, post-menopausal women and oncology patients

} ANDROGEN
PROFILE



What you need to know:

- For the effective diagnosis of PCOS and related disorders (as per Evidence based guidelines for PCOS in Australia 2015), all 4 androgens will be measured.
- We ask that you request all clinically relevant androgens for your patient.*
- Please request 'Ultrasensitive Oestradiol' for the tandem mass spectrometry oestradiol assay.
- The recommended collection time for testosterone is in the early morning.
- For the investigation of PCOS, early follicular phase is the best time to collect an androgen profile.

These tests are Medicare rebatable

Compared to traditional methods of measuring steroids (immunoassay) the method used at Mater Pathology eliminates interference from drugs and related steroids, providing a more ACCURATE and SENSITIVE result allowing confident clinical decision making.

Chemical Pathologists are available for consultation on 3163 8607.

Dr Janet Warner
janet.warner@mater.org.au

and

Dr George Marshall
george.marshall@mater.org.au

*Mater Pathology will report additional androgens from the profile if not requested but clinically relevant.